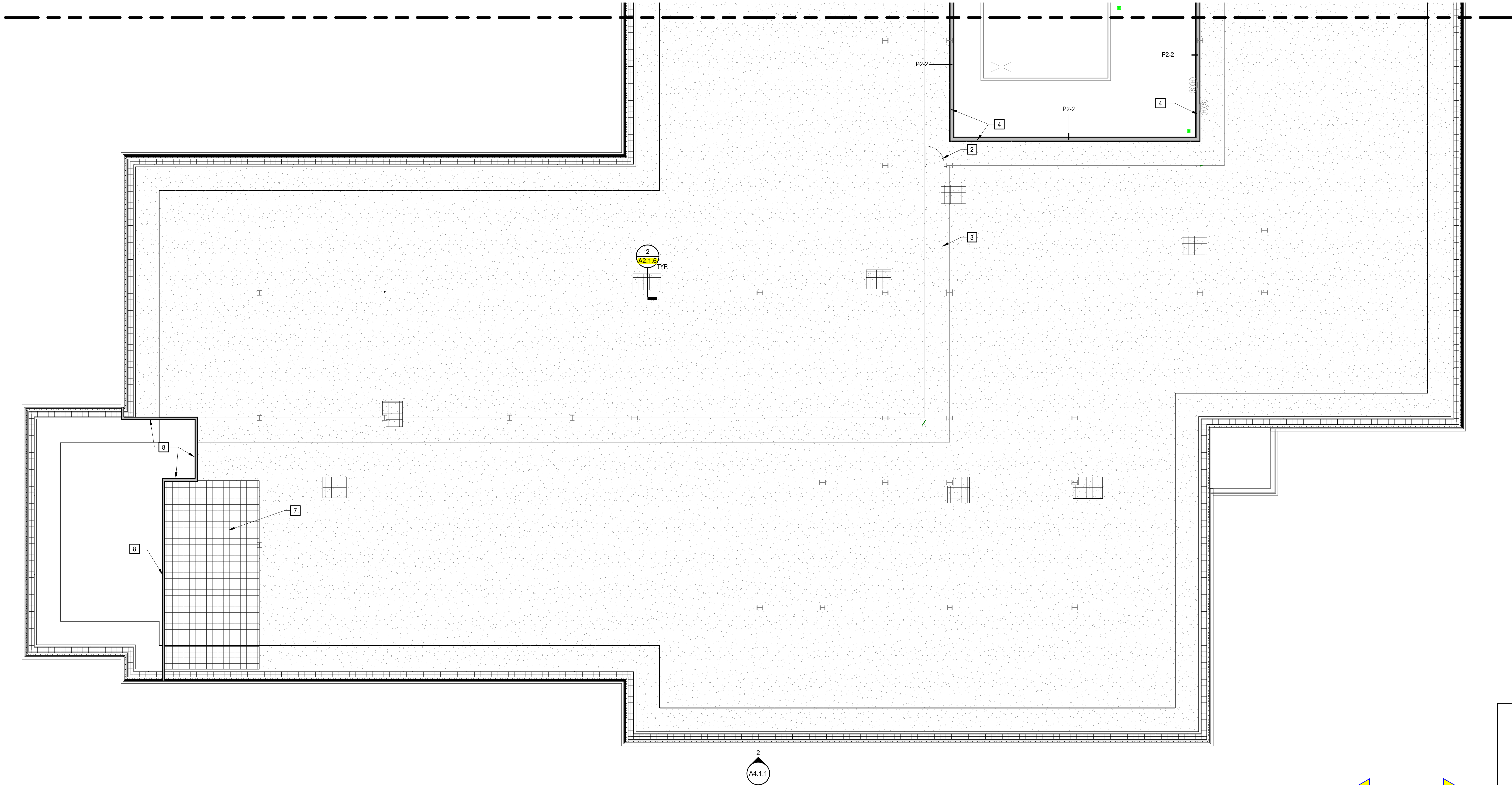
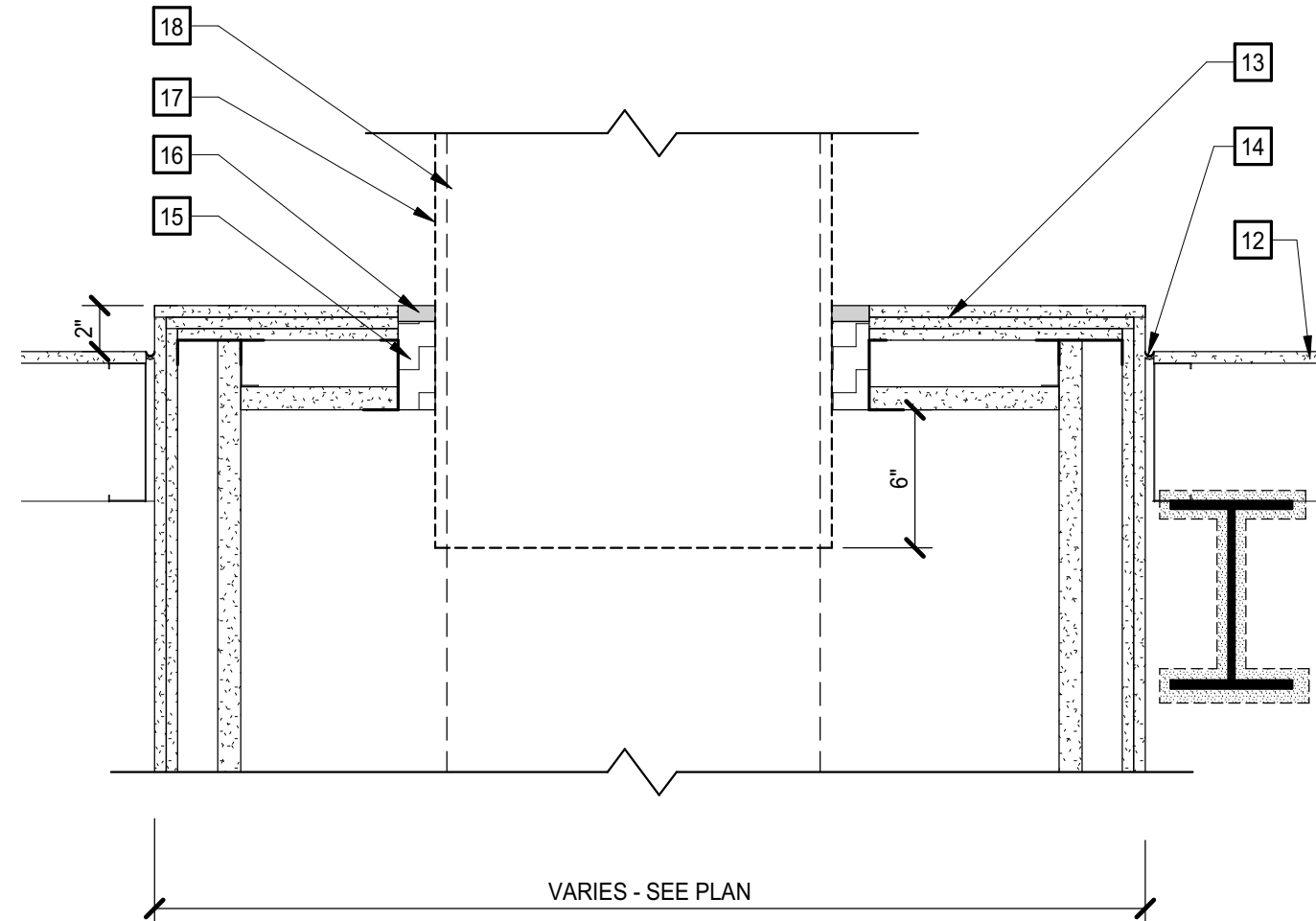


3/27/2019 9:59:48 AM



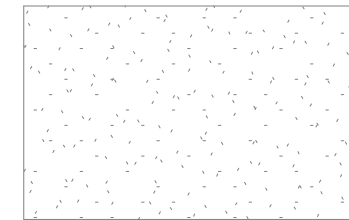
ATTIC FLOOR - ENLARGED AREA B
1/8" = 1'-0"



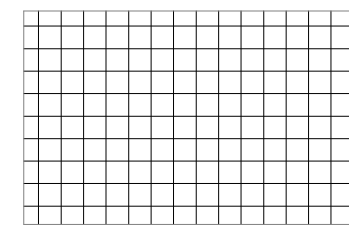
2 SHAFT CAP DETAIL
1 1/2" = 1'-0"

PLAN LEGEND AND NOTES

APPLIES TO DRAWINGS A2.1.5 - A2.1.6



EXTENT OF HORIZONTAL EXTERIOR GLASS-MAT SHEATHING ASSEMBLY. REFER TO STRUCTURAL DRAWINGS FOR DETAILS



EXTENT OF HORIZONTAL EXTERIOR GLASS-MAT SHEATHING ASSEMBLY. REFER TO STRUCTURAL DRAWINGS FOR DETAILS

GENERAL NOTES

- INSTALL 2"x2"x5" SURFACE MOUNTED CORNER GUARDS ON ALL OUTSIDE CORNERS IN CORRIDORS.
- ALL OVERHEAD OBSTRUCTIONS IN ATTIC SPACE LOCATED LESS THE 6'-8" ABOVE FINISHED FLOOR SHALL HAVE SAFETY YELLOW PAINT OR ADHERED STICKER STRIPING.
- LABEL ALL FIRE RESISTANCE RATED WALLS WITH 3" TALL RED STENCILED LETTERING TO READ "FIRE BARRIER - PROTECT ALL OPENINGS" AND SPACE MAX 15 FEET APART
- IF REQUIRED TO RE-CONSTRUCT SECOND FLOOR SHAFTS, USE WALL TYPE P7-2

FLOOR PLAN KEYNOTES

REPRESENTED BY [a]

APPLIES TO DRAWINGS A2.1.1 - A2.1.6

- IN-FILL WALL FLUSH TO MATCH ADJACENT
- EGRESS CONTROL SWING GATE
- EXISTING CATWALK
- CENTER WALL ON EXISTING CURB
- 1-HOUR FIRE RESISTANCE RATED HORIZONTAL CONSTRUCTION
- CONSTRUCT ON EXISTING WALL BELOW; EXTEND TO UNDERSIDE OF ROOF DECK
- ROOF LADDER WITH SAFETY CAGE
- FLAT PANEL TV, OFCI
- GLASS-MAT SHEATHING ASSEMBLY, REFER TO STRUCTURAL
- 2-HOUR FIRE RESISTANCE RATED HORIZONTAL ASSEMBLY
- SEALANT
- MINERAL WOOL
- FIRE RESISTANCE RATED SEALANT
- FIRE RESISTANCE RATED DUCT WRAP, SEE MECHANICAL
- DUCT, SIZE VARIES
- AED DEVICE LOCATION
- BOLLARD

MOSELEYARCHITECTS

911 N. WEST STREET, SUITE 205 RALEIGH, NORTH CAROLINA 27603
PHONE (919) 843-0691
MOSELEYARCHITECTS.COM



Dobo Hall Renovation - Package A

SCO PROJECT NO. 18-19798-01A

UNC Wilmington

4978 CAHILL DR, WILMINGTON, NC 28403

PROJECT NO. 580999 DATE: MARCH 27, 2019

REVISIONS

DATE DESCRIPTION

ATTIC FLOOR PLAN
- AREA B

A2.1.6